



Always a step ahead in technology

Introductory sub-table (I)(a)

Name of the Company: ELECON ENGINEERING COMPANY LTD.

Scrip Code, Name of the scrip, class of security: BSE :- 505700 NSE :- ELECON

Quarter ended: 30TH SEPTEMBER , 2012

Partly paid-up shares:-	No. of partly paid-up shares	As a % of total no. of partly paid-up shares	As a % of total no. of shares of the company
Held by promoter/promoter group	0	0	0
Held by public	0	0	0
Total	0	0	0

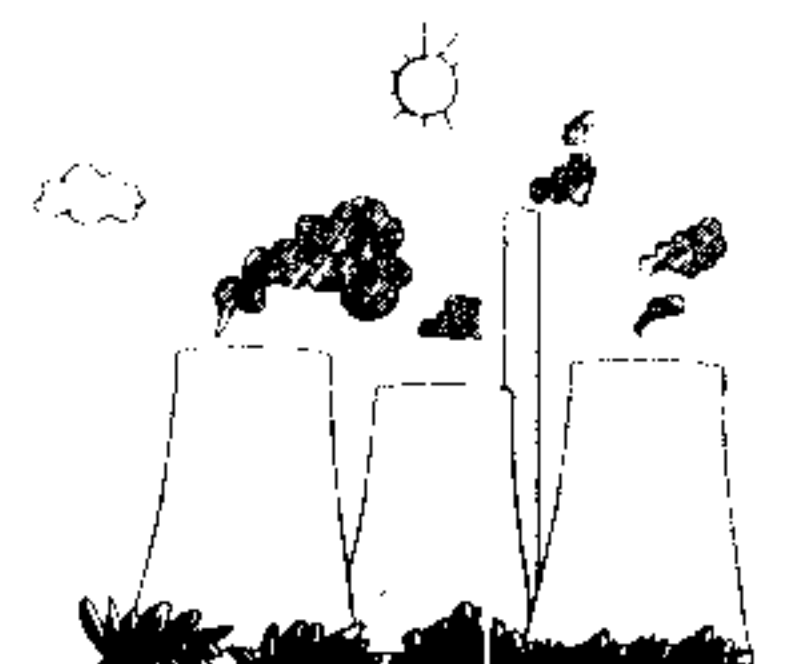
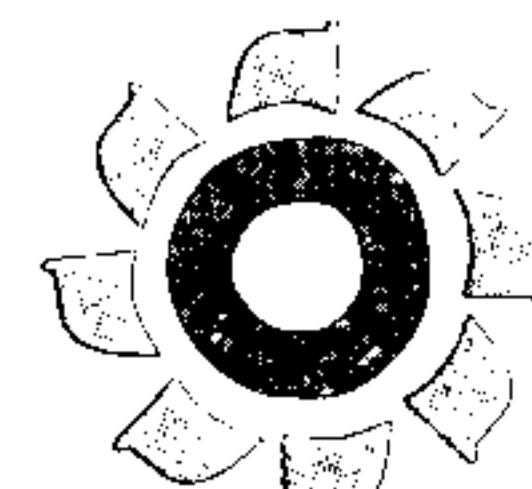
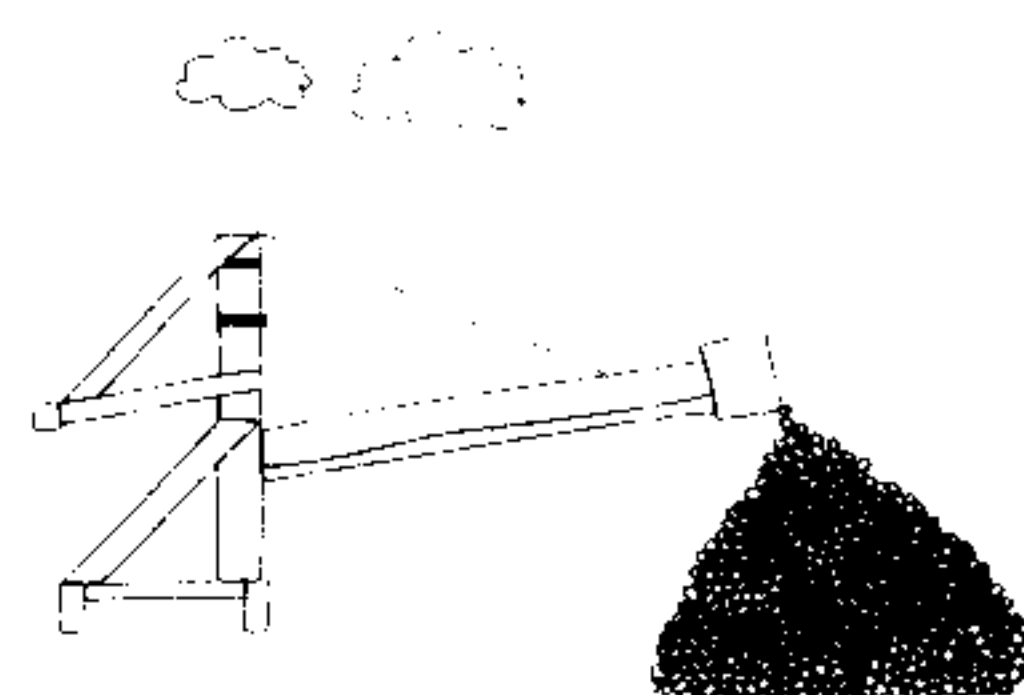
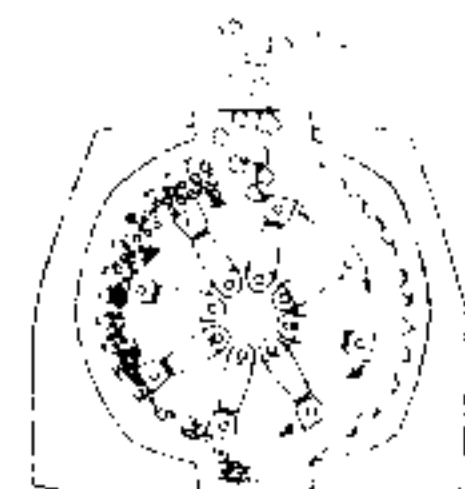
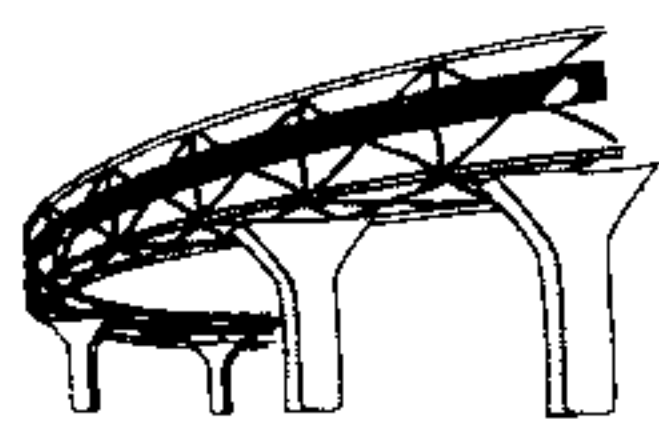
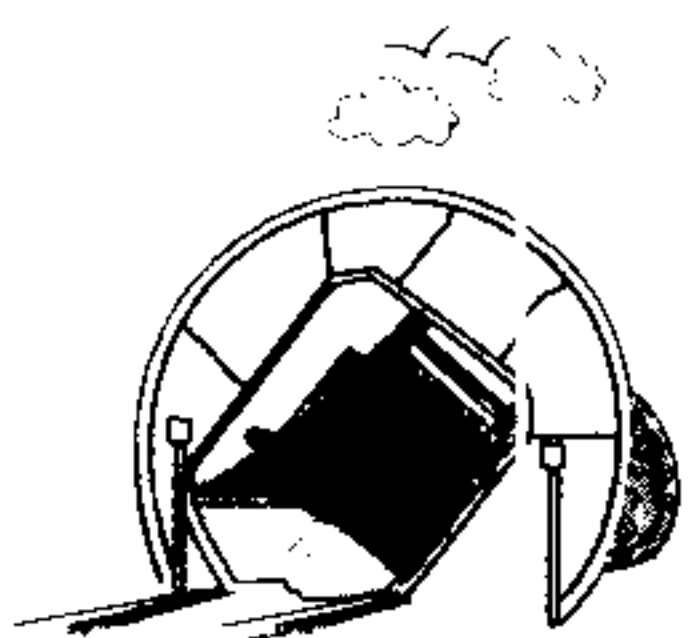
Outstanding convertible securities:-	No. of outstanding securities	As a % of total no. of outstanding convertible securities	As a % of total no. of shares of the company, assuming full conversion of the convertible securities
Held by promoter/promoter group	0	0	0
Held by public	0	0	0
Total	0	0	0

Warrants:-	No. of warrants	As a % of total no. of warrants	As a % of total no. of shares of the company, assuming full conversion of warrants
Held by promoter/promoter group	0	0	0
Held by public	0	0	0
Total	0	0	0

Total paid-up capital of the company, assuming full conversion of warrants and convertible securities	92861510	0	100
--	-----------------	----------	------------

For Elecon Engineering Co. Ltd.

Shubh
Company Secretary



One-stop destination for bulk Material Handling

Statement Showing Shareholding Pattern

Category code	Category of Shareholder	Number of Shareholders	Table (I)(a)		Total shareholding as a percentage of total number of shares		Shares Pledged or otherwise encumbered	
			Total number of shares	Number of shares held in dematerialized form	As a percentage of (A+B) ¹	As a percentage of (A+B+C)	Number of shares	As a percentage
(I)	(II)	(III)	(IV)	(V)	(VI)	(VII)	(VIII)	(IX) = (VIII)/(IV)*100
(A)	Shareholding of Promoter and							
1	Indian							
(a)	Individuals/ Hindu Undivided Family	6	2122999	2122999	2.29	2.29	0.00	0.00
(b)	Central Government/ State Government(s)				0.00	0.00	0.00	0.00
(c)	Bodies Corporate	8	40702920	40702920	43.83	43.83	8874850	21.80
(d)	Financial Institutions/ Banks	0.00	0.00	0.00	0.00	0.00	0.00	0.00
(e)	Any Others(Specify)	0.00	0.00	0.00	0.00	0.00	0.00	0.00
(e-i)		0.00	0.00	0.00	0.00	0.00	0.00	0.00
(e-ii)		0.00	0.00	0.00	0.00	0.00	0.00	0.00
	Sub Total(A)(1)	14	42825919	42825919	46.12	46.12	8874850	20.72
2	Foreign							
a	Individuals (Non-Residents Individuals/ Foreign Individuals)	0.00	0.00	0.00	0.00	0.00	0.00	0.00
b	Bodies Corporate	0.00	0.00	0.00	0.00	0.00	0.00	0.00
c	Institutions	0.00	0.00	0.00	0.00	0.00	0.00	0.00
d	Qualified Foreign Investor	0.00	0.00	0.00	0.00	0.00	0.00	0.00
e	Any Others(Specify)	0.00	0.00	0.00	0.00	0.00	0.00	0.00
e-i		0.00	0.00	0.00	0.00	0.00	0.00	0.00
e-ii								
	Sub Total(A)(2)	0.00	0.00	0.00	0.00	0.00	0.00	0.00
	Total Shareholding of Promoter and	14	42825919	42825919	46.12	46.12	8874850	20.72
(B)	Public shareholding							
1	Institutions							
(a)	Mutual Funds/ UTI	16	13717571	13717571	14.77	14.77	0.00	0.00
(b)	Financial Institutions / Banks	7	52625	28685	0.06	0.06	0.00	0.00
(c)	Central Government/ State Government(s)	1	278648	278648	0.30	0.30	0.00	0.00
(d)	Venture Capital Funds	0.00	0.00	0.00	0.00	0.00	0.00	0.00
(e)	Insurance Companies	0.00	0.00	0.00	0.00	0.00	0.00	0.00
(f)	Foreign Institutional Investors	7	1201491	1201491	1.29	1.29	0.00	0.00
(g)	Foreign Venture Capital Investors	0.00	0.00	0.00	0.00	0.00	0.00	0.00
(h)	Qualified Foreign Investor	0.00	0.00	0.00	0.00	0.00	0.00	0.00
(i)	Any Other (specify)	0.00	0.00	0.00	0.00	0.00	0.00	0.00
(i-ii)		0.00	0.00	0.00	0.00	0.00	0.00	0.00
(i-ii)								
	Sub-Total (B)(1)	31	15250335	15226395	16.42	16.42	0.00	0.00
B 2	Non-institutions							
(a)	Bodies Corporate	652	6388749	6356844	6.88	6.88	0.00	0.00
(b)	Individuals	0.00	0.00	0.00	0.00	0.00	0.00	0.00
I	Individuals -i. Individual shareholders holding nominal share capital up to Rs 1 lakh	51687	23391266	20129046	25.19	25.19	0.00	0.00

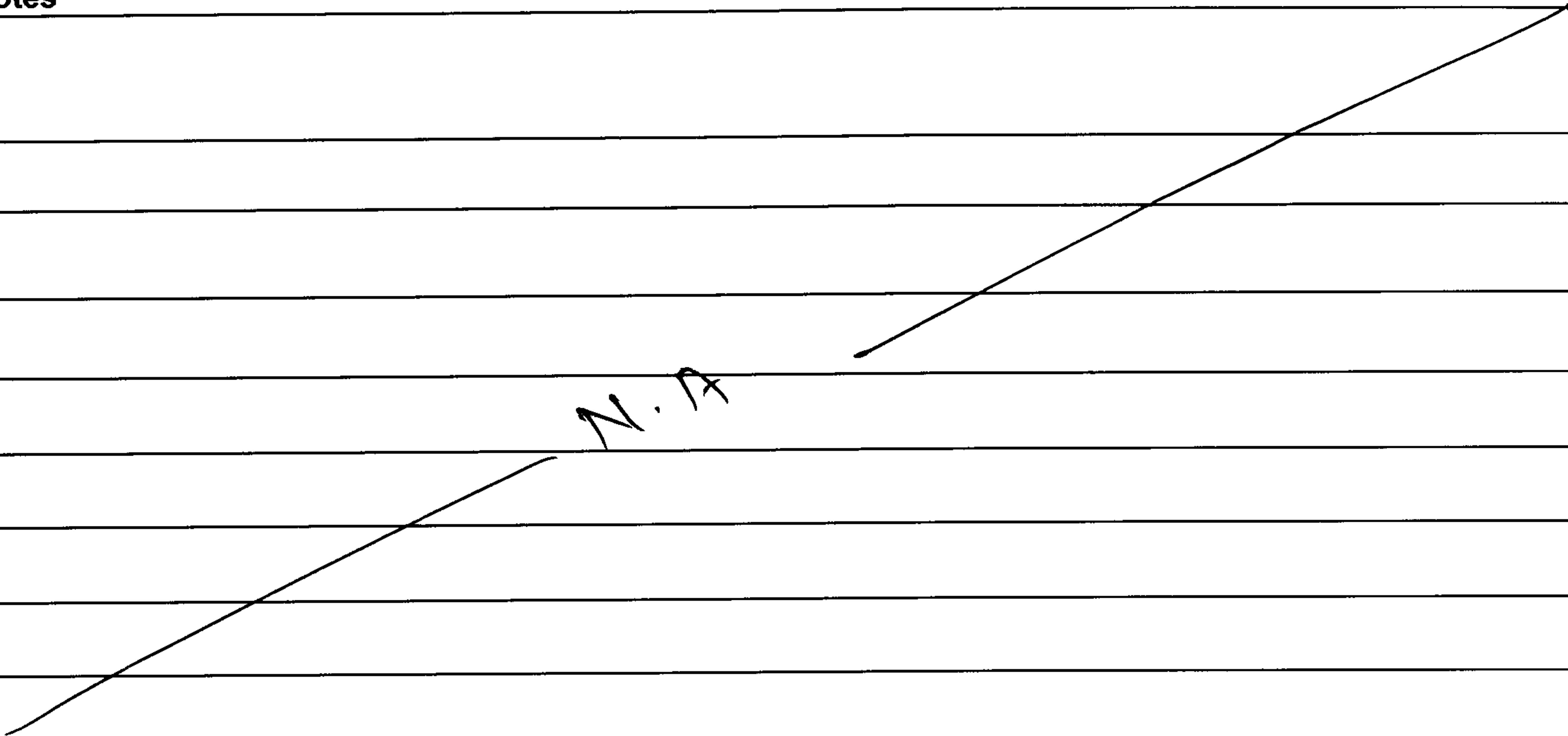
For Elecon Engineering Co. Ltd.


 Company Secretary

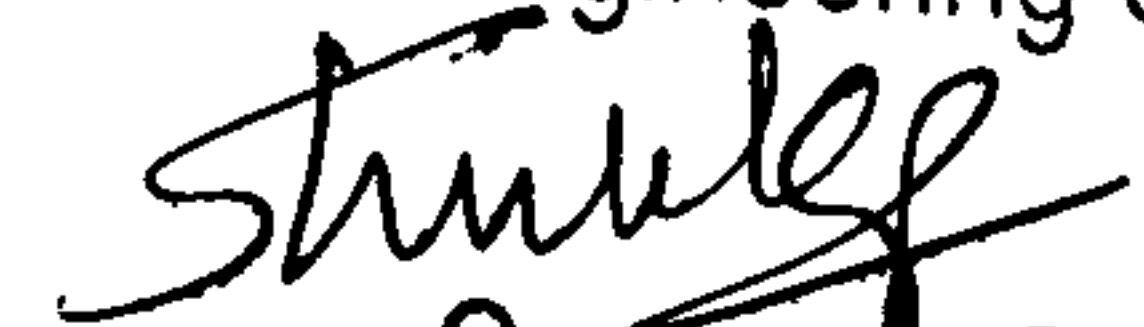
ii	Individual shareholders holding nominal share capital in excess of Rs. 1 lakh.	26	3034275	2852405	3.27	3.27	0.00	0.00
(c)	Qualified Foreign Investor				0.00	0.00	0.00	0.00
(d)	Any Other (specify)				0.00	0.00	0.00	0.00
(d-i)	HUF	317	508808	508808	0.55	0.55	0.00	0.00
(d-ii)	Clearing Members	261	257678	257678	0.28	0.28	0.00	0.00
(d-iii)	Non-Resident (Repatriable)	546	700253	700253	0.75	0.75	0.00	0.00
(d-iv)	Non-Resident (Non-Repatriable)	154	413846	412976	0.45	0.45	0.00	0.00
(d-v)	Trust	5	3000	3000	0.00	0.00	0.00	0.00
(d-vi)	Directors & Their Relatives	2	75561	75561	0.08	0.08	0.00	0.00
(d-vii)	Market Maker	19	11820	11820	0.01	0.01	0.00	0.00
	Sub-Total (B)(2)	53669	34785256	31308391	37.46	37.46	0.00	0.00
(B)	Total Public Shareholding (B)= (B)(1)+(B)(2)	53700	50035591	46534786	53.88	53.88	0.00	0.00
	TOTAL (A)+(B)	53714	92861510	89360705	100.00	100.00	0.00	0.00
(C)	Shares held by Custodians and against which Depository Receipts have been issued							
1	Promoter and Promoter Group	0.00	0.00	0.00	0.00	0.00	0.00	0.00
2	Public							
	Sub-Total (C)	0.00	0.00	0.00	0.00	0.00	0.00	0.00
	GRAND TOTAL (A)+(B)+(C)	53714	92861510	89360705	0.00	100.00	8874850	9.56

For Elecon Engineering Co. Ltd.


 Company Secretary

Sr.No	Notes
1	 <p data-bbox="1190 798 1396 904">N.A</p>
2	
3	
4	
5	
6	
7	
8	
9	

Elecon Engineering Co. Ltd.



Company Secretary

(I)(b) Statement showing holding of securities (including shares, warrants, convertible securities) of persons belonging to the category "Promoter and Promoter Group"

Sr. No.	Name of the shareholder	Details of Shares held		Encumbered shares (*)			Details of warrants		Details of convertible securities		Total shares (including underlying shares assuming full conversion of warrants and convertible securities) as a % of diluted share capital
		Number of shares held	As a % of grand total (A)+(B)+(C)	No.	As a percentage	As a % of grand total (A)+(B)+(C) of sub-clause (I)(a)	Number of warrants held	As a % total number of warrants of the same class	Number of convertible securities held	As a % total number of convertible securities of the same class	
(I)	(II)	(III)	(IV)	(V)	(VI)=(V)/(III)*100	(VII)	(VIII)	(IX)	(X)	(XI)	(XII)
1	EMTICI ENGINEERING LIMITED	21647677	23.31	7367000	34.03	7.93		0		0	
2	PRAYAS ENGINEERING LIMITED	10078471	10.85	1507850	14.96	1.62		0		0	
3	POWER BUILD LIMITED	15960	0.02	0	0.00	0.00		0		0	
4	BIPRA INVESTMENTS AND TRUSTS PRIVATE LTD.	1717280	1.85	0	0.00	0.00		0		0	
5	DEVKISHAN INVESTMENTS PRIVATE LIMITED	453220	0.49	0	0.00	0.00		0		0	
6	ELECON INFORMATION TECHNOLOGY LIMITED	250805	0.27	0	0.00	0.00		0		0	
7	K B INVESTMENTS PRIVATE LIMITED	5691265	6.13	0	0.00	0.00		0		0	
8	AKAAISH MECHATRONICS LIMITED	848242	0.91	0	0.00	0.00		0		0	
9	TARUNA PATEL	143307	0.15	0	0.00	0.00		0		0	
10	PRAYASVIN BHANUBHAI PATEL	405182	0.44	0	0.00	0.00		0		0	
11	PRAYASVIN BHANUBHAI PATEL	99962	0.11	0	0.00	0.00		0		0	
12	PRAYASVIN BHANUBHAI PATEL	36000	0.04	0	0.00	0.00		0		0	
13	PRAYASVIN B. PATEL(On behalf of Bhanubhai I. Patel - HUF)	227490	0.24	0	0.00	0.00		0		0	
14	TRUPTI PRADIP PATEL	1211058	1.30	0	0.00	0.00		0		0	
	TOTAL	42825919	46.12	8874850	20.72	9.56	0	0	0	0	0

For Elecon Engineering Co. Ltd.

Shubh
Company Secretary

(I)(c)(ii) Statement showing holding of securities (including shares, warrants, convertible securities) of persons (together with PAC) belonging to the category “Public” and holding more than 5% of the total number of shares of the company

Sr. No.	Name(s) of the shareholder(s) and the Persons Acting in Concert (PAC) with them	Number of shares	Shares as a percentage of total number of shares {i.e., Grand Total (A)+(B)+(C) indicated in Statement at para (I)(a) above}	Details of warrants		Details of convertible securities		Total shares (including underlying shares assuming full conversion of warrants and convertible securities) as a % of diluted share capital
				Number of warrants	As a % total number of warrants of the same class	Number of convertible securities held	% w.r.t total number of convertible securities of the same class	
1								
2								
3								
4								
5								
6								
7								
8								
9								
10								
TOTAL		0	0.00	0	0	0	0	0

NOT APPLICABLE

For Elecon Engineering Co. Ltd.

Shubalpa
Company Secretary

(I)(d) Statement showing details of locked-in shares

Sr. No.	Name of the shareholder	Number of locked-in shares	Locked-in shares as a percentage of total number of shares {i.e., Grand Total (A)+(B)+(C) indicated in Statement at para (I)(a) above}
1			
2			
3			
4			
5			
6			
7			
8			
9			
TOTAL		0	0.00

NOT APPLICABLE

Shree Engineering Co. Ltd.

Shree

Company Secretary

(II)(a) Statement showing details of Depository Receipts (DRs)

Sr. No.	Type of outstanding DR (ADRs, GDRs, SDRs, etc.)	Number of outstanding DRs	Number of shares underlying outstanding DRs	Shares underlying outstanding DRs as a percentage of total number of shares {i.e., Grand Total (A)+(B)+(C) indicated in Statement at para (I)(a) above}
1				
2				
3				
4				
5				
6				
7				
8				
9				
TOTAL		0	0	0.00

NOT APPLICABLE


Company Secretary

