

ELECON

Range of Products for Plastic Industry



INTRODUCTION



Elecon, India's largest manufacturer of Industrial Gears

Founded in 1951, over 60 years ago, Elecon set out on its journey to scale new heights of technical excellence, creating landmarks at every juncture. From elevators and conveyors to high quality gears and being the pioneers in manufacturing of sophisticated bulk material handling equipment. Elecon set up a separate Gear Division in the year 1976. Elecon is renowned for its pioneering acts in India. Elecon's skilled work force compliments them in Elecon's march towards providing innovative solutions. Elecon has supplied hi-tech equipment to major core industries such as Fertilizer Plants, Cement Plants, Coal and Lignite Mines, Power Plants, Textile Industries, Plastics, Steel Plants and Port Mechanization in India and abroad.

BHANUBHAI MEMORIAL CENTRE OF EXCELLENCE (BMCE)

In last five decades, we have done lots of research and innovations in gear technology. We have developed variety of products in transmission business from worm gear to helical, from planetary to vertical planetary, variable speed couplings, etc. This development always demanded overall progress in gear manufacturing technology, right from cutting to carburizing, gear grinding. The extract of learning is used in layout, machine selection as well in process improvement of gear manufacturing. The new plant will produce internal components of the helical gear box and has a capacity of manufacturing 1000 gear boxes per month.

This new plant is a tribute to our founder Chairman Lt. SHRI BHANUBHAI PATEL who wanted to remain "ALWAYS A STEP AHEAD IN TECHNOLOGY."



Bhanubhai Memorial Centre of Excellence (BMCE)

PLASTIC INDUSTRY IN INDIA

The potential of the Indian market has motivated Indian entrepreneurs to acquire technical expertise, attain higher quality standards and build capacities across various facets of the booming plastic industry. Phenomenal developments in the plastic machinery sector coupled with matching developments in the petrochemical sector that support the plastic processing sector, has facilitated the plastic processors to build capacities to service both the domestic and overseas markets.

In the plastic processing sector there are over 30,000 units involved in producing varieties of products through injection moulding, blow moulding, extrusion and calendaring. The capacities built up in most segments along with our latent capacities have propelled us in being able to serve the overseas markets.

Economic reforms launched in India since 1991, have provided an impetus to the plastic industry. Joint ventures, foreign investments and easier access to technology from developed nations have led to the opening up of new vistas to facilitate the growth of this industry.

SINGLE SCREW EXTRUDER GEARBOXES



Elecon Extruder Gear Modular series consists of combination of Gear units and flanged axial bearing housing for accommodating axial self-aligning Roller Bearings of different load capacities.

- ELECON Gear box is designed to transmit high torque and absorbing high thrust load induced by the process of pressurizing & plasticising moulding materials and synthetics required for fiber line production.
- Case carburized and hardened Helical Gears are ground with profile correction for transmission of high load with low noise.
- The casing of great robustness in Grey Cast Iron, designed to the latest acoustic and heat transfer technology.
- Gears and antifriction bearings are splash lubricated as standard and with built in cooling coil. Forced lubrication system available as standard option.
- High degree of standardization and adoption of common gear casing gives optimum availability, economy and faster delivery.
- The ELECON Quality Assurance System is In accordance with DIN EN ISO-9001:2008 Guarantees a uniform high standard of quality.
- CE Certification is obtained for all series gear units.

TWIN SCREW EXTRUDER GEAR BOX



ETS SERIES PARALLEL TWIN SCREW GEAR BOX

ELECON Twin Screw Drives offers dual-shaft co-rotating extruder gear units. The gearboxes of this series have been developed by featuring high torque and high speed output rate. The series of gearboxes are embedded with excellence high dissipation and oil lubrication system to perform stable output under heavy loading force. The axial thrust is supported by axial roller-type swivel thrust bearing of the 294...E series, coupled with thrust bearing assembled in tandem way. ELECON aim to offer the high tech and reliable product service to the customer worldwide.

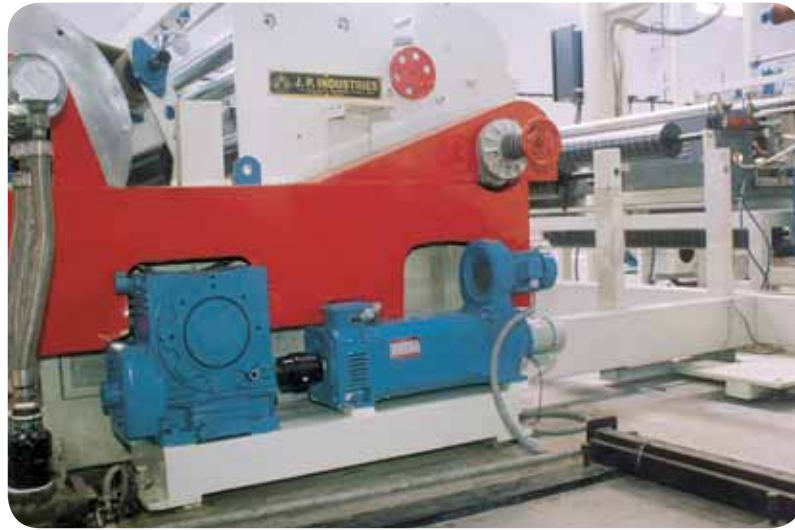
Feature :

- Parallel Twin screw Extruder is specifically designed and developed for the application.
- ELECON has adopted proven technology from world leader as well as from own development.
- Featuring high torque and high output speed rated design.
- Coupled with thrust bearings assembled in tandem way.
- The best transmission efficiency & high torque and sufficient safety co-efficient.
- The precision of gear grinding upto DIN 6 grade, operation noise is kept below 80 dBA.
- Forced lubrication and built-in the cooling and filter system ensure excellent heat dissipation.
- Highest gearbox structure strength ensures minimum rotation vibration.

WORM GEAR UNIT

WHY PLASTIC INDUSTRY PREFERS ELECON WORM GEAR UNITS?

Elecon Super Series is a proven design Gear Units (SNU) with a combination of innovative design and factory filled, long life synthetic lubricant there by offering higher power-ratings in NU Super Series Gear Units: 1 5/8", 1 3/4", 2", 2 1/4" up to 17".



SNU Worm Gear Unit

Elecon Super Series Worm Gear Units are highly accepted by Plastic Industry for applications like Extruder, Laminating plant, Packing Machine, Offset Printing Machines, Tape Line Machine, Sheet Line Machines etc.

SNU Worm Gear Box on machine multilayered sheet-line cast film.

COUPLINGS

Elecon make 'ELIGN COUPLINGS' are very compact in design, It is ideally suitable for wide range of applications in the entire field of drive technology including Plastic industry & processing machinery,

ELECON also manufactures Fluid, Geared and Flexible couplings, Use of gear coupling provides benefit to accommodate",

Radial Misalignment - Angular Misalignment & Combined radial & angular misalignment to Its certain limits, Also, it permits axial displacement to the specified limits,





RADICON POWER BUILD PVT LTD

RADICON POWERBUILD PVT LTD is the largest manufacturer of GEARED MOTORS & GEAR REDUCERS in the country since last more than three decades. With a view to provide our customers with a latest design, new generation, efficient and compact drive solution, PBL has introduced a new series of Geared Motors in the form of M, C, F & K Series Geared motors.

HELICAL INLINE GEARED MOTORS SERIES "M"



RADICON POWERBUILD Series 'M' Helical Inline Geared Motor and Reducers belong to the latest generation highly efficient Universal drive solutions suitable for almost all applications. The product has a very sturdy and elegant design that covers ratios beyond 20,000:1 along with a capability of delivering a torque of 20,000 Nm.

RIGHT ANGLED HELICAL WORM GEARED MOTORS SERIES "C"



RADICON POWERBUILD range of Helical Worm Geared Motor provides the optimum solutions for right angled drives with a high efficiency and multiple mounting options. Ratios upto 250:1 can be easily achieved in just two stages and upto 16,000:1 in multiple stages. Torques upto 10,000 Nm can be transmitted.

IN-LINE SHAFT MOUNTED GEARED MOTORS SERIES "F"



RADICON POWERBUILD Series 'F' Parallel Shaft Mounted Geared Motor comes with multiple mounting options and ratios upto 20,000:1 in multiple stages. This product comes with an integral torque arm for shaft mounted applications. This product is also extensively used for Hoists & Cranes, Still and tube rolling mills, Steel pipe manufacturing and a range of conveyor applications.

PLANETARY GEARED MOTOR SERIES "PL"



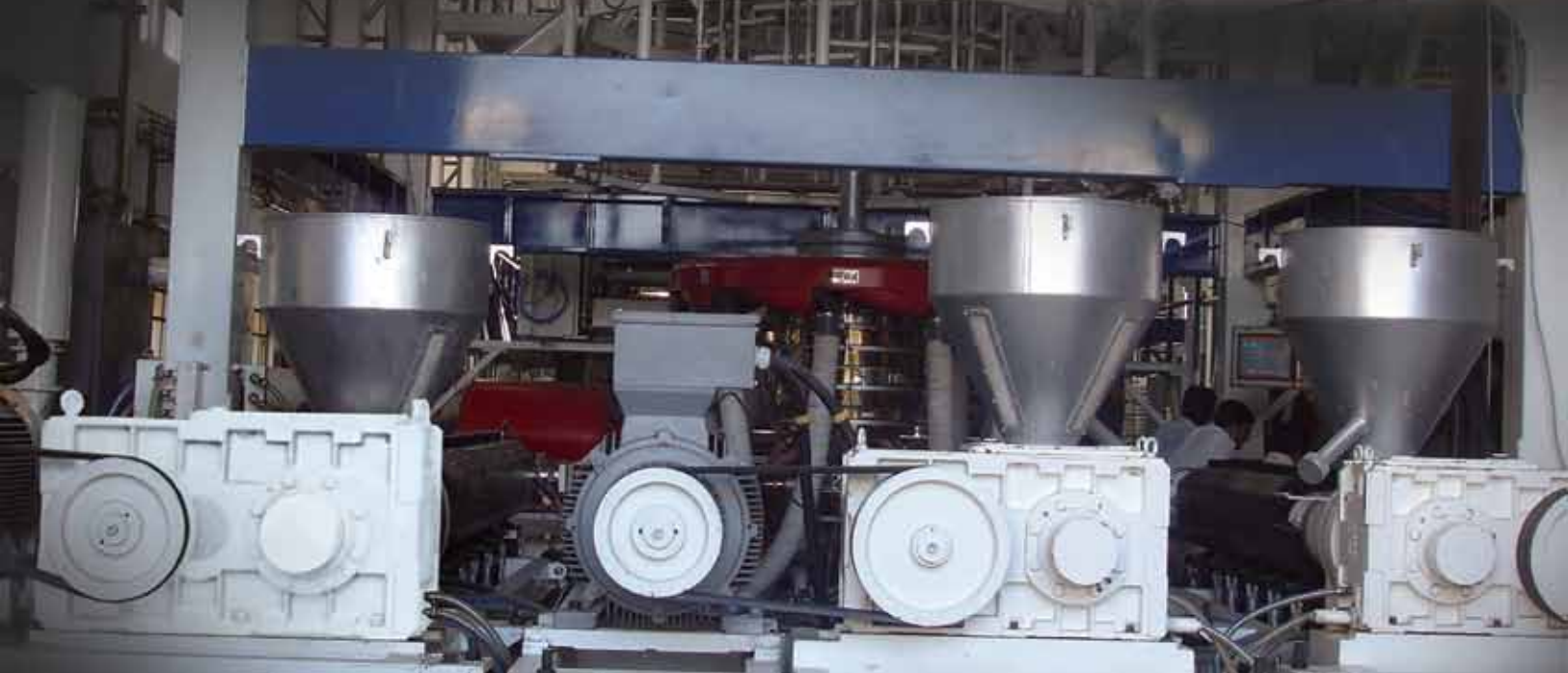
RADICON POWERBUILD range of smart Planetary Geared Motor and Gearbox provide an ideal solutions for inline (and right angled) applications which require very high ratios upto 2500:1 in a limited space. The current product range covers torque upto 65,000 Nm. The product has a range of options on the output side to suit customer needs.

More than 70,000 units have already been sold and found working satisfactory.



ELECON

Extruder Gear units in Various
Extrusion application for
PLASTIC INDUSTRY



National Branches :

Ahmedabad

Tel: +91 79 26406683/26406684/26406685
 Fax: +91 79 2640 1363
 Email : salesahd@elecon.com

Bangalore

Tel: +91 80-25290082, 25250219, 25252925
 Fax: +91 80-25251834
 Email : salesbgl@elecon.com

Bilaspur

Tel: +91 7752 247723 / 247625
 Fax: +91 7752 247720
 Email : salesbil@elecon.com

Chennai

Tel: +91 44 24349237/24349497/24322455
 Fax: +91 44 2434 9643
 Email : saleschn@elecon.com

Indore

Tele Fax: + 91 731 257 6100
 Email : salesindr@elecon.com

Kolkata

Tel: +91 33 2476 1861 / 2476 0876
 Fax: +91 33 2476 1831
 Email : saleskol@elecon.com

Madurai

Tel: +91 4549 293488
 Email : salesmadu@elecon.com

Nagpur

Tel: +91 712 6642600 / 6642 601
 Fax: +91 712 6642 622
 Email : salesnag@elecon.com

Mumbai

Tel: +91 22 22821315/22820725/22821365
 Fax: +91 22 2287 0791
 Email : salesbom@elecon.com

New Delhi

Tel: +91 11 2341 4340 / 2341 4341
 Fax: +91 11 2370 9046
 Email : salesdel@elecon.com

Pune

Tel: +91 20 4019 1400
 Fax: +91 20 4019 1411
 Email : salespune@elecon.com

Raipur

Tele Fax: +91 771 2259 321 /23/24/30
 Email : salesrai@elecon.com

Hyderabad

Tele Fax: +91 40 64561199
 Email : salessec@elecon.com

Vadodara

Tel: +91 265 2313 670
 Tele Fax: 91 265 2312 972 / 2312 980
 Email : salesvad@elecon.com

Vallabh Vidyanagar

Tel. +91 02692-231125 / 227559/227549/ 227560
 E mail : salesvvn@elecon.com

International Branches :

MIDDLE EAST :

ELECON MIDDLE EAST FZCO, Dubai
 Phone : +97 146 091 424, +97 146 091 425
 Fax : +97 146 091 426
 E-mail : salesme@elecon.com

FAR EAST :

ELECON SINGAPORE PTE. LTD.
 Phone : +65 622 782 58
 Fax : +65 622 789 42
 E-mail : salesap@elecon.com

radicon

AUSTRALIA

Radicon Transmission
 (Australia) Pty. Ltd.
 Tel: +61 488 054 028
 Fax: +61 295 213 522
 salesap@elecon.com
 www.radicon.com

UNITED KINGDOM

Radicon Transmission UK LTD.
 Tel: +44 (0)1484 465800
 Fax: +44 (0)1484 465801
 sales@radicon.com
 www.radicon.com

THAILAND

Radicon Transmission Thailand Ltd.
 Tel : +66 38 459 044
 Fax: +66 38 213 655
 salesap@elecon.com
 www.radicon.com

UNITED STATES OF AMERICA

RADICON USA
 Tel. 1-847-593-9910
 Fax. :1-847-593-9950
 salesusa@radicon.com
 www.radicon.com

MIDDLE EAST

Radicon Transmission FZE
 Tel: + 97165527950
 Fax: + 97165527951
 radicon@eim.ae
 www.radicon.com

benzlers

SWEDEN

AB Benzlers
 Tel: + 46 42 18 68 00
 Fax: + 46 42 21 88 03
 info@benzlers.com
 www.benzlers.com

NETHERLANDS

Benzler-TBA BV
 Tel : +31 077 324 5900
 Fax: +31 077 324 5901
 mail@benzlers.com
 www.benzlers.com

GERMANY

Benzler Antriebstechnik
 Gmbh
 Tel: +49 0800 350 4000
 Fax: +49 0800 350 4001
 mail@benzlers.com
 www.benzlers.com

FINLAND

O.Y. Benzler AB
 Tel: +358 9 340 1716
 Fax: +358 10 296 2072
 info@benzlers.com
 www.benzlers.com

DENMARK

Benzler Transmission A/S
 Tel: +45 36 34 0300
 info@benzlers.com
 www.benzlers.com

